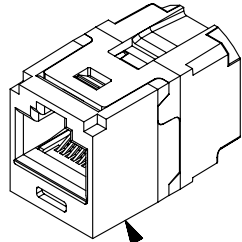


THIS COPY IS PROVIDED ON A RESTRICTED BASIS AND IS NOT TO BE USED IN ANY WAY DETRIMENTAL TO THE INTERESTS OF PANDUIT CORP.

A

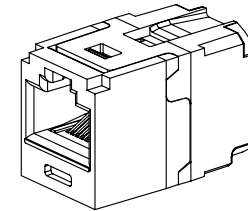
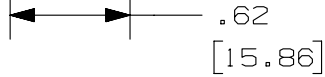
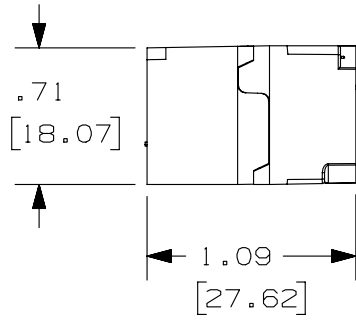
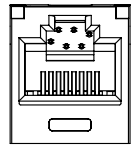
PANDUIT PART#	COLOR	DESCRIPTION	WEIGHT
CC688BL CC688IW CC688GR CC688BU CC688OR	BLACK INT. WHITE GREEN BLUE ORANGE	MINI-COM CATEGORY 6 COUPLER MODULE	1.36 LB/100 PCS (616g/100 PCS)



COUPLER MODULE

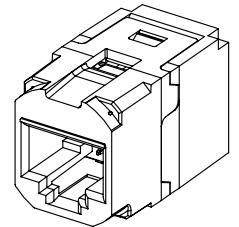
NOTES:

- CATEGORY 6/CLASS E 8-POSITION FEMALE-TO-FEMALE COUPLER MODULE
- MATERIAL:
MODULE HOUSING - UL94-V0 ABS
MODULE CIRCUIT BOARD - GLASS REINFORCED EPOXY RESIN
MODULE CONTACT CARRIER - UL94-V0 ABS
- DIMENSIONS IN PARENTHESES ARE IN METRIC.
- COMPATIBLE WITH ALL PANDUIT MINI-COM FACEPLATES AND MODULAR PATCH PANELS. NOT COMPATIBLE WITH SURFACE MOUNT BOXES.
- ACTS AS A SINGLE CONNECTOR IN CATEGORY 6/CLASS E CHANNELS
- c(UL)US LISTED FILE NUMBER E129886
- ALSO AVAILABLE AS 24-PORT COUPLER PATCH PANEL, PART NUMBER CP24688BL.



FRONT

ACTUAL SIZE



REAR

PART NUMBER		CC688**	
TITLE			
MINI-COM CAT6 COUPLER MODULE			
CUSTOMER DRAWING			
ITEM REVISION NAME		M02731CD/01	
DATASET FILE NAME		M02731CD_DC11/01B	
UNLESS OTHERWISE SPECIFIED, DIMENSIONAL TOLERANCES ARE: IN [mm]		MATERIAL:	
.x ± .xx ± .03 [.8]		SEE NOTE 2	
.xxx ± .010 [.3]		DRAWING NUMBER:	
ANGLES ±		02731-11	
THIRD ANGLE PROJECTION		SHT 1 OF 1	
DRAWN BY	DATE	CHK	SCALE
NER	7-25-07	CEF	FULL
REV		SIZE	
A		A	

REV	DATE	BY	CHK	APR	DESCRIPTION	ECN
02	6-20-14	MDJR	REFR	EJH	A. ADDED PART NUMBERS FOR GREEN, BLUE, AND ORANGE COLORS.. REMOVED PREVIOUS REVISIONS FOR CLARITY.	02731-11

D10100DA/14

2

1